

## 4.3 Troubleshooting

The troubleshooting table below provides typical operating problems and the means to restore normal operation. If you cannot restore normal operation, do not open the cover of the FA-40; there are no user serviceable parts inside the receiver.

Symptom	Remedy
Cannot turn on the power.	<ul style="list-style-type: none"> <li>Check the cable between the receiver and power for damage.</li> <li>Check the power supply.</li> <li>Check the fuse.</li> </ul>
Cannot receive.	<ul style="list-style-type: none"> <li>Check that the VHF antenna cable is firmly connected.</li> <li>Check the VHF antenna and its cabling for damage.</li> <li>Confirm the channel setting.</li> </ul>
ERROR LED lights in red.	Contact your dealer.
ERROR LED lights in orange.	Check that the optional GPS antenna is correctly connected.
Cannot start the AIS Setting Tool, or cannot connect the PC to the receiver.	<ul style="list-style-type: none"> <li>Check the USB cable between the receiver and the PC for damage.</li> <li>Do the following:               <ol style="list-style-type: none"> <li>Quit the AIS Setting Tool.</li> <li>Disconnect the USB cable from the PC, and then connect the cable again.</li> <li>Start the AIS Setting Tool.</li> </ol> </li> </ul>
No position data (when optional GPS antenna unit is connected).	<ul style="list-style-type: none"> <li>Check the GPS antenna.</li> <li>Check the GPS antenna cable and its connectors.</li> </ul>

### AIS Receiver FA-40

The FA-40 has no power switch. Power is fed from the ship's switchboard, and a power switch on the switchboard turns the FA-40 on or off.

The table below shows the function for each LED.

LED	Color	Meaning
POWER	Green	When the power is on, the POWER LED lights in green.
ERROR	Red	The ERROR LED lights in red when equipment error (RX, ROM, or RAM) is found.
	Orange	The ERROR LED lights in orange when the equipment is not installed correctly.
RX	Green	The RX LED lights in green for 50 msec when receiving.

POWER LED

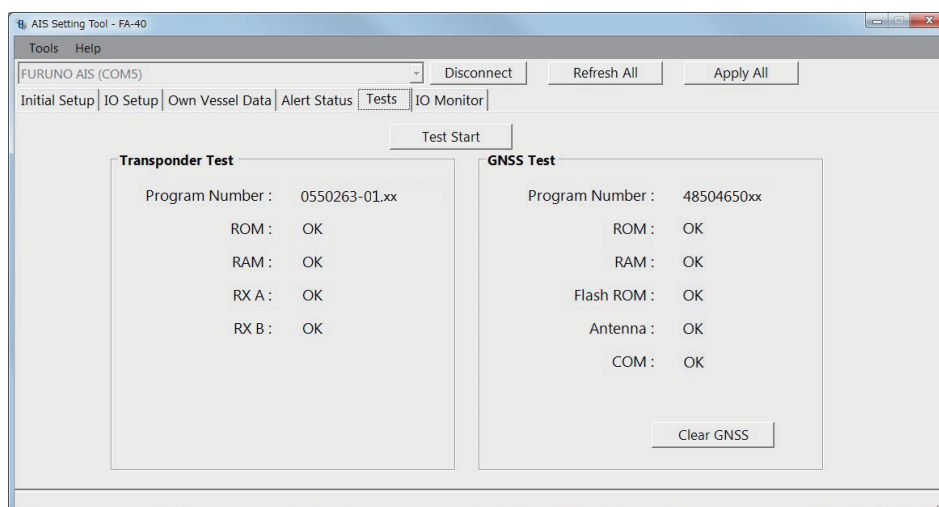
ERROR LED (See the table below.)



Red	Orange
<ul style="list-style-type: none"> <li>Memory error</li> <li>RX1/2 PLL unlock error</li> </ul>	GPS antenna short

## 4.4 Diagnostics

The FA-40 provides diagnostic tests to check the receiver unit for proper operation.



*[Tests] screen for PC*

Menu item	Description
[Test Start] (for the PC)	Click to start the test.
[Transponder Test]	The program version number appears on the first line. The RAM, ROM, and two RX channels (A and B) are checked for proper operation, and the results are displayed as "OK" or "NG" (No Good). For any NG, contact your dealer for advice.
[GNSS Test]	The program version number appears on the first line. The ROM, RAM, Flash ROM, the connection with antenna (including power line) and COM (communication) are checked for proper operation, and the results are displayed as [OK] or [NG] (No Good). For any NG, contact your dealer for advice.
[Clear GNSS] (for the PC)	Click to initialize the internal GNSS core. The confirmation message "Clear GNSS. Are you sure?" appears. Click [Yes] to initialize.