

# Samyung NF430 Fish Finder



**It will bring all mariners to a distinctive level of experincing at sea !!**

***Wide 4.3" High resolution TFT LCD !!***

***Function by using icon for menu !!***

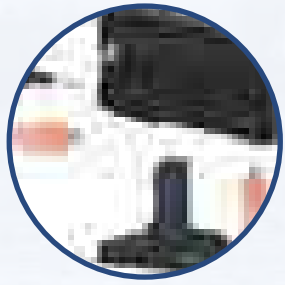
**Wide 4.3" Color GPS/Combo/Fishfinder *N430/NF430/F430***



More Information



Save a chart image on internal memory (128M)  
Save internal data on SD card  
View and print saved data on SD card

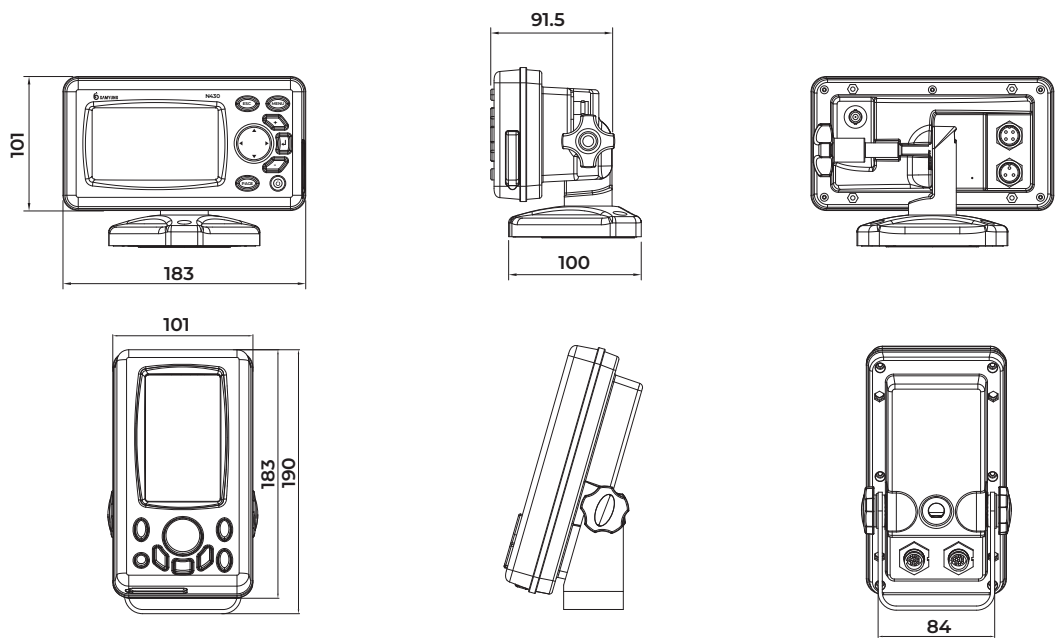


Adjustable bracket can be attached or detached easily

Features

- Wide 4.3" High resolution TFT LCD
- Fast screen response by high performance CPU
- 10 steps adjustable LED backlight
- Multiple languages available including English, Chinese, Russian, Thai, Mala, etc.
- 128MB internal memory and built-in standard - Samyung chart
- DGPS(WAAS, MSAS, EGNOS)
- User-friendly operation type by using icon for each menu
- NMEA 0183 interface (AIS, NAVTEX, DSC, etc.)
- 2 splits creens (Chart, Data, Highway, etc.)
- Suitable for small fishing boat
- Using single frequency (200Khz) ford etection of small and individual fish
- Easy to use by auto gain

Dimensions



Component

Main unit	1 unit
GPS Antenna (N430/NF430)	1 unit
Transducer (N430/NF430)	1 unit
Installation materials, Spare parts, Manual	1 set

Option

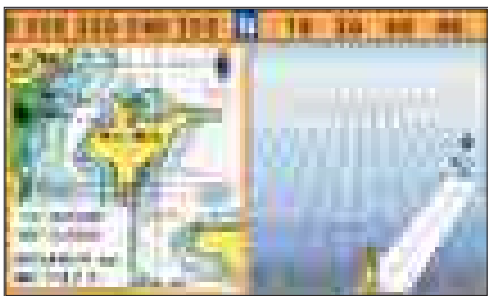
PowerSupply  
SDCard



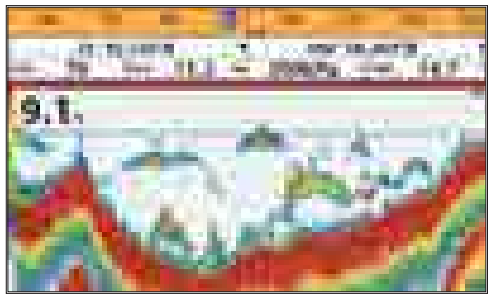
- AIS information on chart plotter by connecting to compatible AIS receiver (NMEA 0183)
- Two split screen presentation available
- Display multiple functions on split screen



- Various icons



- Choose a page/function by using icon for menu



- High output power 200W built-in-RMS enable to distinguish a seabed up to 300 m
- Single frequency (200 kHz) transducer
- Zoom, Bottom lock, Full screen zoom, Bottom, 200 KHz, A-Scope

# Spesification

Spec.	Model	N430	NF43	F430
Size		127.5 mm(H) x183 mm(W) x91.5 mm(D)		
Display		Wide4.3", TFTcolor, 480 x272 pixels		
Supply voltage		10 to36 VDC		
Supply current		13.8 V, 0.13Amin-nobacklighting. 0.24Amax-fullbacklighting.		
Operating temp.		-10°C~ 50°C		
Alarms		Arrival radius, anchor, XTE, danger, too shallow, too deep, fish, temperature, temperature rate, low battery, low fuel (optional), loss of DGPS fix, radar guard zone, dangerous AIS vessels.		
Chart/User card		C-MAP™ SD Card (NT-MAX, NT+ or NT) / SD Card		-
Waypoints		10,000 way points (Event Mark: 48, Mark Color: 16)		-
Routes		100 Routes, with up to 100 point seach		-
Tracks		By time or distance, 10 track of 15,000 points		-
Chart datums		216 Chart datums (see next page)		-
Chart scale		0.2 ~ 500 nm		-
Interface		NMEA0183		-
Frequency		-	200KHz	
Output		-	300W	
Depth Range		-	Min: 0m~3m, Max: 0m~300m	
Color Display		-	16 colors	
Brightness		-	10-step	
Screen Moving Speed		-	super fast, fast, medium, low, stop	
Battery Voltage Display		-	Voltage number dispaly	
AUTO GAIN Adjustment		-	OFF/ON	
A-Mode Display		-	OFF/ON	
Demo Dispaly		-	OFF/ON	
Weak Color Removal		-	0%~75%	

\* Specification is subject to change without notice

