

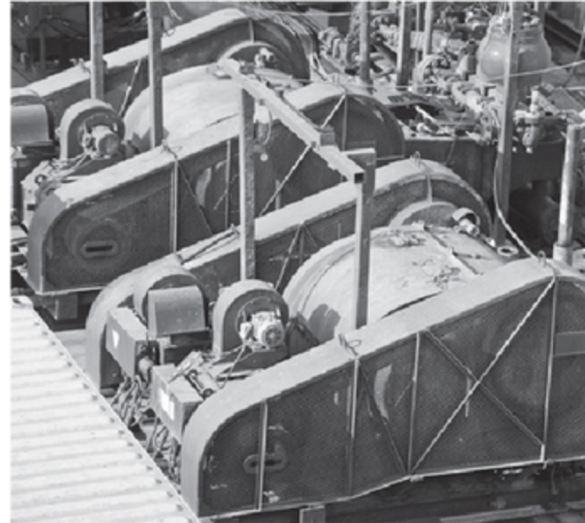


# SC 1000

**Solar-powered satellite tracking  
for intelligent visibility.**

Get asset location, status and more—virtually  
anywhere

Built for ORBCOMM's OGx network, the SC1000 solar-powered satellite tracker helps deliver visibility into previously untracked assets in remote areas. Its small size, solar battery and integrated satellite antenna help make asset tracking easy and affordable across a wide range of applications. Resistant to dust, water, shock and vibration, the SC 1000 is built to provide global coverage for light- and heavy-duty vehicles, containers, trailers, railcars, farm equipment, maritime vessels and more—even in the world's harshest environments. The SC 1000 goes beyond asset tracking, enabling businesses to perform utilization, dwell and door monitoring. Receive alerts when assets start moving to help improve cargo security. Install and remove quickly and easily on virtually any type of equipment. The SC 1000 also supports ORBCOMM's wireless door sensors to enhance and monitor asset security. Connect your SC 1000 to the ORBCOMM platform—or use the ORBCOMM platform's flexible API to integrate the SC 1000 with your own platform—for streamlined asset management.



**Solar battery**

**Satellite connectivity**

**Quick and easy install**

**Rugged**

**Software flexibility  
with ORBCOMM  
platform and  
API support**

**More Information**

0821 9900 2018 [Pernika.com](http://Pernika.com)



# Specifications

## Satellite communication

- ORBCOMMOGtwo-wayglobalsatellite service

## Dimensions

- 8.8 x 3.0 x 1.1 in • 224 x 76 x 28 mm • Plastic material: polycarbonate • Color: white

## Certifications\*

- Inmarsat typeapproval
- FCC/IC
- CE RED 2014/53/EU
- ATEX Zone 2
- CID2
- ROHS
- WEEE
- HERO
- Contact ORBCOMM for full list of certifications

## Sensors

- 3-axisaccelerometer, device temperature
- BLE door sensor

## Wireless

- BLE5.2

## Battery

- Type:Li-on • Operating temperature: -30°C to 70°C • Storage temperature: -40°C to 85°C

## Environmental

- Ingressprotection:IP67 and IPX9K • Vibration: AAR-S-9401, rail car body mounted • Mechanical shock: MIL-STD-810HG, method 516.8, 40g

## Global positioning

- Constellationssupported:
  - GPS
  - GLONASS
  - BeiDou
  - Galileo

\* All certifications are pending

Although we strive to ensure accuracy in all of our published specifications, actual field performance can vary depending on a variety of environmental, installation and usage factors, as well as third-party factors such as cellular providers. The specifications listed are approximations, and do not constitute binding statements or modify the terms and conditions of purchase or lease including, but not limited to, product operational limitations and warranties. All specifications are subject to change without notice. Please check [www.orbcomm.com](http://www.orbcomm.com) to ensure you have the latest version of these specifications.