



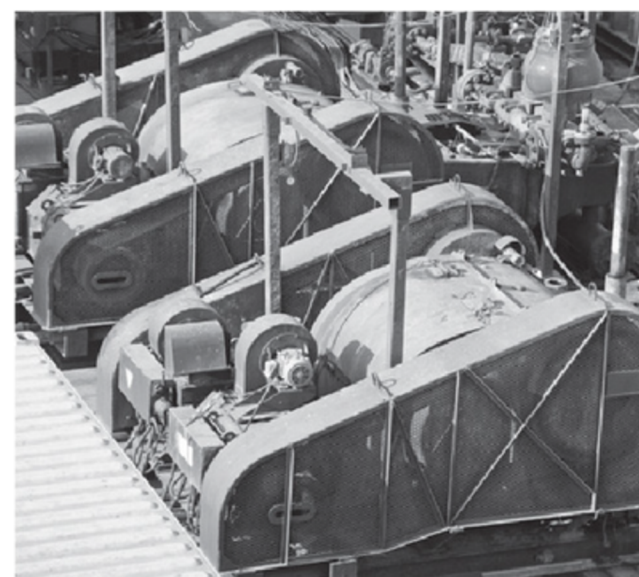
Solar Powered Asset Manager

SmartOne Solar



More Information

0821 9900 2018 Pernika.com



SmartOne Solar™

SolarPoweredAssetManager

The SmartOne Solar is the next generation of Globalstar's industry-acclaimed SmartOne product line. While operating on one of the most modern and fastest satellite networks in the world and powered by the sun, this IoT device provides excellent remote monitoring and tracking capabilities. The SmartOne Solar's NiMH rechargeable batteries deliver up to 10 years of usable service, drastically reducing maintenance time and cost for labor and parts. It lets users intelligently configure reporting times and intervals for custom information delivery. The SmartOne Solar has unparalleled safety/device certifications such as ATEX, IECEx and North America, IP68/69K, HERO certifications, and others to meet the needs of every application.

Let the SmartOne Solar streamline your M2M operations today!

POTENTIAL APPLICATIONS

- Transportation: Monitor&track assets and fleet movements even in remote locations.
- Oil & Gas: Aids in mobilizing & deploying high value assets in the field.
- Construction: Determine if, when & where your valuable equipment is being used.
- Security: Keep track of valuable mobile assets such as rail cars, propane tanks & AgTech.
- Marine: Monitor & track high value assets, such as boats, barges and containers, at the dock and off-shore.
- Other industry uses: Mining, forestry, government, fisheries, etc.

CONFIGURATION SOFTWARE

- Configuration software tool operates on a PC via serial cable
- Bluetooth interface also available for configuration and firmware updates

BENEFITS

- Maintenance-free device as the power of the sun recharges its batteries providing up to 10 years of usable service
- Delivers reliable location reporting for assets deployed worldwide – providing security and improved efficiency for your business
- Easy to install as simple packaging requires no harnesses, external power or external antennas
- Wide range of reporting capabilities, including:
 - GPS Location reporting in 4 modes
 - Stationary or In-Motion Reporting
 - Reduced Messaging & Theft Recovery Modes
 - Transmits data from external sensors
- User selectable Speed and Heading operation
- Two dry contact or wetted-voltage inputs available to manage engine run time, tank level or various alarm inputs



SmartOne Solar™

SolarPoweredAssetManager

TECHNICAL SPECIFICATIONS



OPERATING SPECIFICATIONS

DIMENSIONS	3.25 IN (H) X 7 IN (W) X 1.125 IN (D) 8.26 CM (H) X 17.78 CM (W) X 2.86 CM (D)	CERTIFICATIONS	- FCC, ISED, CE, AUS/NZ, ANATEL, INMETRO – LMP 19.0127 X -PENDING: JQA(JAPAN), IFT, INDONESIA
WEIGHT	13.5 oz/385 g With optional mounting bracket 40.57 oz. (1150 g)	INTRINSIC SAFETY CERTIFICATIONS:	- ATEX/IECEEx II 1 G,Ex ia IIC T4 Ga For international Zone 0 applications, HERO
OPERATING TEMPERATURE	-40° to +65° C**	STANDARDS	- North America cETLus: -Class I, Division 1, Groups A-D, T4 - Class I, Zone0, AEx iaIIC T4 Ga
INPUT VOLTAGE	10 TO 48 VDC		- WEEE Compliant
BATTERY TYPE	Built-in rechargeable NiMH batteries (non-replaceable)		- GMPCS-MoU
SATELLITE TECHNOLOGY	Global LEO Satellite operation using the Globalstar Simplex Data Network. See Globalstar website for Coverage Map.		- IP68/69K
			- MIL-STD-810G for: - Immersion - Impact resistance - Salt Fog - Acidic Atmosphere - Humidity - Vibration

ACCESSORIES

- Globalstar USB Configuration Cable (Part No. 2030-0261-01)*
 - Globalstar Universal Input Cable (Part No. 2030-0265-04)*
 - Stainless Steel Mounting Bracket (Part No. 7000-0278-01)
 - Bluetooth Dongle (Part No. 1950-0105-01)
- *Device is not intrinsically safe when these cables are connected. Same for the USB.

FEATURE SET

STANDARDMESSAGING

- Wake, GPS locate, transmit location, resume sleep settings
- 12 programmable sleep time-of-wake settings

INTEGRATED ACCELEROMETER

- Message on start and stop
- Engage interval override on motion for set time or while in motion

ALTERNATIVEREPORTING

- Supervisory reporting schedule triggered by alarm or motion
- Transmits GPS location on interval for programmed time or while alarm remains active

CHANGE OF LOCATION

- Theft-alert reporting based on distance moved
- Reduced messaging mode

SERIAL COMMUNICATION CAPABILITY

- User defined messages
- Serial (TTL) I/O capability to interface with remote passive and smart sensors and deliver user-defined messages
- Bluetooth interface for configuration/ firmware updates

*Device is not intrinsically safe when these cables are connected.
**While functional in the specified Operating Temperature Range, usage of the SmartOne Solar above 60°C may cause RF signal degradation and decreased battery lifetime of the unit.